

MINI L pumps family



This family of pumps provides a large vacuum flow even though they are very small in size and lightweight. Vacuum level to 75 -kPa. Some pumps in this family are available with connection plate in aluminium or composite PA. These are recommended to use when the handled product is made of porous material such as cardboard, wood or paper.

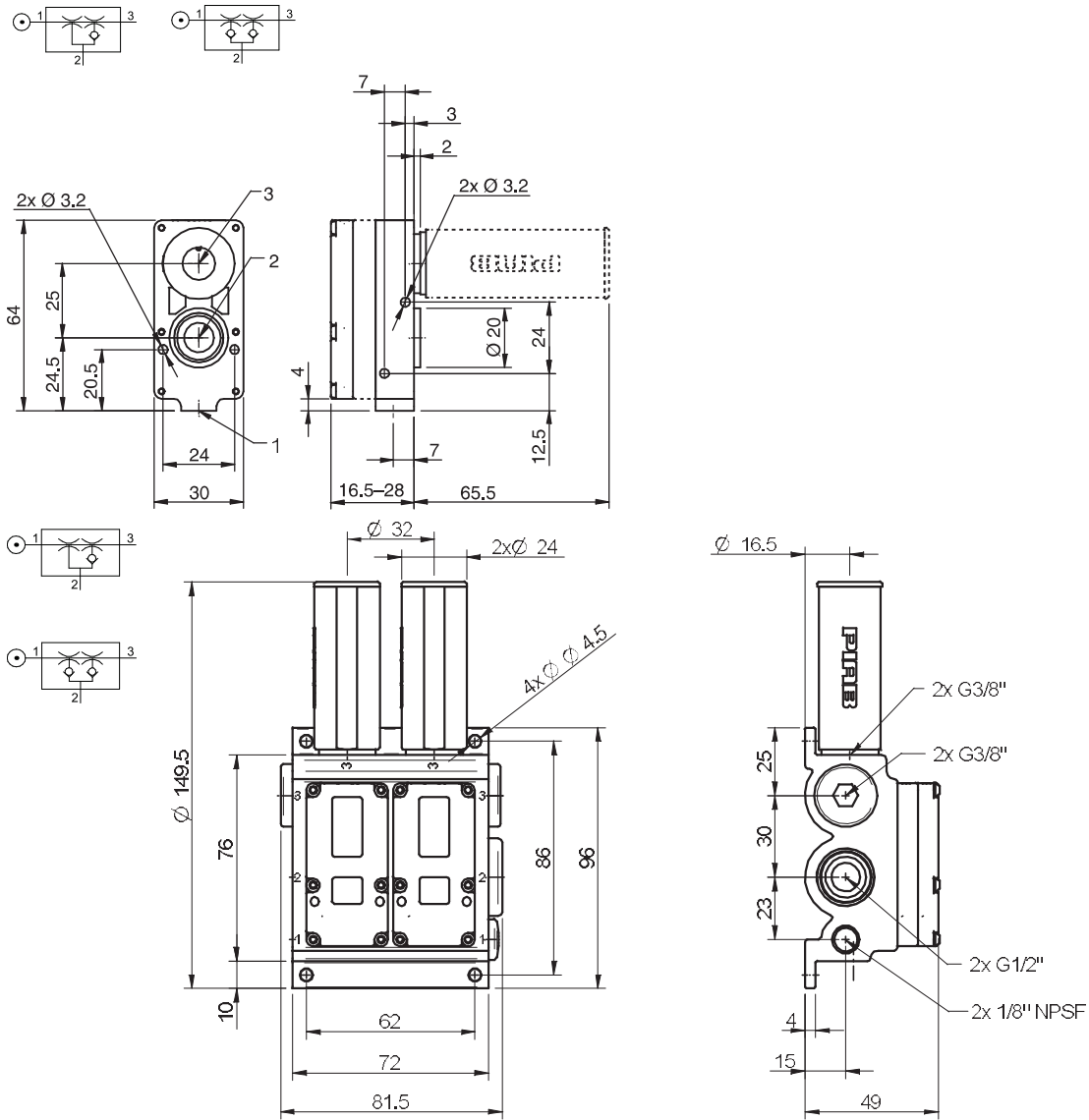
VACUUM FLOW

Pump name	Feed pressure MPa	Air consumption NI/s	Vacuum flow (NI/s) at different vacuum levels (-kPa)								Max vacuum -kPa
			0	10	20	30	40	50	60	70	
L7	0.6	0.49	0.72	0.49	0.29	0.25	0.2	0.16	0.1	0.067	75
L14	0.6	0.98	1.5	1	0.57	0.45	0.39	0.32	0.24	0.13	75
L28	0.6	2	2.6	1.7	1.1	0.89	0.74	0.55	0.36	0.17	75
L56	0.6	4	5.1	3.5	2	1.7	1.4	1.1	0.81	0.43	75

EVACUATION TIMES

Pump name	Feed pressure MPa	Air consumption NI/s	Evacuation time (s/l) to reach different vacuum levels (-kPa)							Max vacuum -kPa
			10	20	30	40	50	60	70	
L7	0.6	0.49	0.093	0.31	0.72	1.2	1.8	2.6	3.8	75
L14	0.6	0.98	0.064	0.17	0.36	0.59	0.88	1.3	1.8	75
L28	0.6	2	0.047	0.11	0.2	0.32	0.46	0.69	1.1	75
L56	0.6	4	0.023	0.053	0.1	0.16	0.23	0.33	0.5	75

DIMENSIONAL DRAWING



ORDERING INFORMATION

Description	Item No.
Vacuum pump MINI L7, conn. A, NBR sealings	0102853
Vacuum pump MINI L14, conn. C, NBR sealings	0102743
Vacuum pump MINI L14, conn. B1, NBR sealings	0102831
Vacuum pump MINI L14, conn. B1, NBR sealings, non-return valve	0102832
Vacuum pump MINI L14, conn. B, NBR sealings	0103055
Vacuum pump MINI L28, conn. C, NBR sealings	0102749
Vacuum pump MINI L28, conn. C, NBR sealings, non-return valve	0102750
Vacuum pump MINI L28, conn. B1, NBR sealings	0102833
Vacuum pump MINI L28, conn. B1, NBR sealings, non-return valve	0102834
Vacuum pump MINI L28, conn. B, NBR sealings	0103061
Vacuum pump MINI L28, conn. B, NBR sealings, non-return valve	0103062
Vacuum pump MINI L56, conn. K, NBR sealings	0102797
Vacuum pump MINI L56, conn. K, NBR sealings, non-return valve	0102798