

COAX® MINI family



The two-stage COAX® cartridge MINI has small mounting dimensions and the three-stage COAX® cartridge MINI has high initial vacuum flow.

VACUUM FLOW

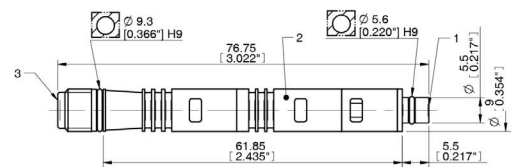
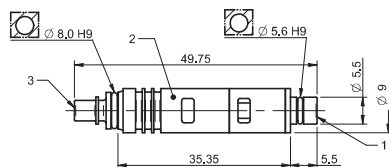
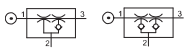
COAX® Cartridge	Feed pressure MPa	Air consumption NI/s	Vacuum flow (NI/s) at different vacuum levels (-kPa)										Max vacuum -kPa
			0	10	20	30	40	50	60	70	80	90	
MINI Di16-2	0.6	0.75	0.64	0.57	0.49	0.41	0.35	0.29	0.18	0.04	—	—	73
MINI Pi12-2	0.32	0.44	0.68	0.6	0.44	0.27	0.19	0.14	0.1	0.06	0.03	—	90
MINI Pi12-3	0.32	0.44	1.4	0.6	0.44	0.27	0.19	0.14	0.1	0.06	0.03	—	90
MINI Pi12-3 FS	0.32	0.44	1.4	0.6	0.44	0.27	0.19	0.14	0.1	0.06	0.03	—	90
MINI Si08-2	0.6	0.44	0.77	0.67	0.51	0.33	0.23	0.16	0.12	0.08	—	—	75
MINI Si08-3	0.6	0.44	1.34	0.73	0.55	0.35	0.23	0.17	0.13	0.08	—	—	75

COAX® Cartridge	Feed pressure MPa	Air consumption NI/s	Vacuum flow (NI/s) at different vacuum levels (-kPa)										Max vacuum -kPa
			0	10	20	30	40	50	60	70	80	90	
MINI Si08-3 FS	0.6	0.44	1.34	0.73	0.55	0.35	0.23	0.17	0.13	0.08	—	—	75
MINI Xi10-2	0.5	0.46	0.75	0.63	0.49	0.33	0.19	0.15	0.11	0.07	0.045	0.011	94
MINI Xi10-3	0.5	0.46	1.43	0.7	0.5	0.33	0.19	0.15	0.11	0.07	0.045	0.011	94
MINI Xi10-3 FS	0.5	0.46	1.43	0.7	0.5	0.33	0.19	0.15	0.11	0.07	0.045	0.011	94

EVACUATION TIMES

COAX® Cartridge	Feed pressure MPa	Air consumption NI/s	Evacuation time (s/l) to reach different vacuum levels (-kPa)									Max vacuum -kPa
			10	20	30	40	50	60	70	80		
MINI Di16-2	0.6	0.75	0.17	0.35	0.58	0.84	1.15	1.58	2.49	—	—	73
MINI Pi12-2	0.32	0.44	0.17	0.32	0.58	1.1	1.8	2.7	4	6.4	—	90
MINI Pi12-3	0.32	0.44	0.08	0.23	0.49	1	1.7	2.6	3.9	6.3	—	90
MINI Pi12-3 FS	0.32	0.44	0.08	0.23	0.49	1	1.7	2.6	3.9	6.3	—	90
MINI Si08-2	0.6	0.44	0.14	0.31	0.55	0.9	1.4	2.1	3.1	—	—	75
MINI Si08-3	0.6	0.44	0.1	0.25	0.48	0.8	1.3	2	2.9	—	—	75
MINI Si08-3 FS	0.6	0.44	0.1	0.25	0.48	0.8	1.3	2	2.9	—	—	75
MINI Xi10-2	0.5	0.46	0.14	0.3	0.6	1	1.6	2.3	3.5	5.3	8.9	94
MINI Xi10-3	0.5	0.46	0.09	0.26	0.5	0.9	1.5	2.2	3.4	5.2	8.8	94
MINI Xi10-3 FS	0.5	0.46	0.09	0.26	0.5	0.9	1.5	2.2	3.4	5.2	8.8	94

DIMENSIONAL DRAWING



ORDERING INFORMATION

Description	Item No.
COAX® cartridge MINI Di16-2	0204917
COAX® cartridge MINI Di16-2, holding cap	0204918
COAX® cartridge MINI Pi12-2	0106922
COAX® cartridge MINI Pi12-2, extra non-return valve	0106963
COAX® cartridge MINI Pi12-2, holding cap	0106924
COAX® cartridge MINI Pi12-2, holding cap, extra non-return valve	0106964
COAX® cartridge MINI Pi12-3	0106895
COAX® cartridge MINI Pi12-3, extra non-return valve	0106956
COAX® cartridge MINI Pi12-3, extra non-return valve, holding cap silencer, vacuum filter	0106676
COAX® cartridge MINI Pi12-3, holding cap	0106923
COAX® cartridge MINI Pi12-3, holding cap silencer, vacuum filter	0104265
COAX® cartridge MINI Pi12-3, holding cap, extra non-return valve	0106957
COAX® cartridge MINI Si08-2	0113583
COAX® cartridge MINI Si08-2, extra non-return valve	0113587
COAX® cartridge MINI Si08-2, holding cap	0113585
COAX® cartridge MINI Si08-2, holding cap, extra non-return valve	0113589
COAX® cartridge MINI Si08-3	0113214
COAX® cartridge MINI Si08-3, extra non-return valve	0113575
COAX® cartridge MINI Si08-3, extra non-return valve, holding cap silencer, vacuum filter	0113581
COAX® cartridge MINI Si08-3, holding cap	0113572
COAX® cartridge MINI Si08-3, holding cap silencer, vacuum filter	0113579

Description	Item No.
COAX® cartridge MINI Si08-3, holding cap, extra non-return valve	0113577
COAX® cartridge MINI Xi10-2	0120284
COAX® cartridge MINI Xi10-2, extra non-return valve	0120280
COAX® cartridge MINI Xi10-2, holding cap	0120294
COAX® cartridge MINI Xi10-2, holding cap, extra non-return valve	0120300
COAX® cartridge MINI Xi10-3	0120286
COAX® cartridge MINI Xi10-3, extra non-return valve	0120289
COAX® cartridge MINI Xi10-3, extra non-return valve, holding cap silencer, vacuum filter	0120776
COAX® cartridge MINI Xi10-3, holding cap	0120299
COAX® cartridge MINI Xi10-3, holding cap silencer, vacuum filter	0120775
COAX® cartridge MINI Xi10-3, holding cap, extra non-return valve	0120298