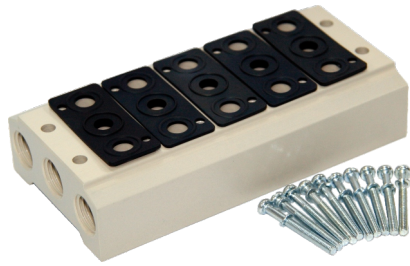


Manifold



Specification

| Item\Manifold Model | 100M | 200M | 300M | 400M |
|--------------------------|---|--------------|--------------|--------------|
| Fluid | Air(to be filtered by 40 μm filter element) | | | |
| Temperature | -20~70℃ | | | |
| Adaptable valve's series | 4V100 Series | 4V200 Series | 4V300 Series | 4V400 Series |

Product feature

1. It is available to integrate the direction control valves of the same series to form valve group to save space and cost.
2. It is easy to examine when there are faults owing to the unified air intake and exhaust and unified wiring.
3. Flexible combination and strong expansion capability can make any combination or expansion of the numbers of direction control valves that are connected.

Ordering code

Ordering code for manifold

100M 5F G

① ② ③

| ① Model | ② Number of stations [Note1] | ③ Thread type |
|--|---|---------------|
| 100M:100 Series manifold 200M:200 Series manifold 300M:300 Series manifold 400M:400 Series manifold | 1F: 1 Station 2F: 2 Station 3F: 3 Station 16F: 16 Station | G: G Thread |

Ordering code for blank plate

P-100M-R2

① ② ③

| ① Kits model | ② Model | ③ Code |
|--------------|--|------------------------------|
| P: Kits | 100M: 100 Series manifold 200M: 200 Series manifold 300M: 300 Series manifold 400M: 400 Series manifold | R2: Blank plate for manifold |

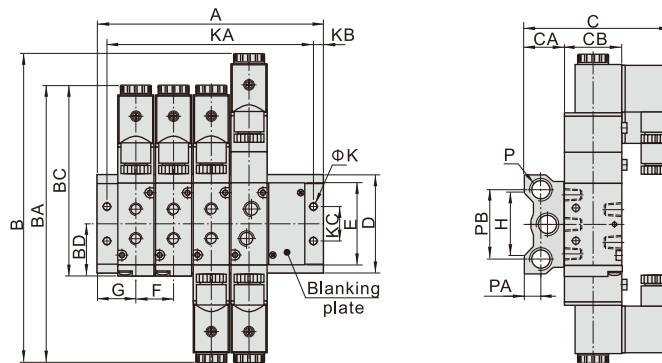
[Note1] 100M, 200M series have a maximum of 16 stations ; 300M series have a maximum of 12 stations; 400M series have a maximum of 8 stations.

[Note] 1. Ordering code contains the two parts of the manifold's and the blank plate's. 2. Manifold kits contains manifold, seal and screw.

3. Blank plate kits contains blank plate and screw.

Dimensions

With 4V solenoid valve



| Model\Item | B | BA | BC | BD | C | CA | CB | D | E | F | G | H | K | KB | KC | P | PA | PB |
|------------|-------|-------|-------|------|-----|----|----|------|----|----|------|----|-----|----|----|------|------|----|
| 100M□F | 154.5 | 142.5 | 99.5 | 28 | 77 | 22 | 27 | 57.5 | 43 | 19 | 19 | 36 | 4.5 | 5 | 20 | 1/4" | 10 | 40 |
| 200M□F | 189 | 171 | 117 | 31.7 | 91 | 24 | 35 | 60 | 52 | 23 | 22 | 38 | 4.5 | 5 | 21 | 1/4" | 10 | 42 |
| 300M□F | 208 | 190 | 135 | 40 | 97 | 28 | 40 | 75 | 64 | 28 | 26 | 54 | 4.5 | 5 | 26 | 3/8" | 13.5 | 53 |
| 400M□F | 243 | 223 | 168.5 | 57 | 107 | 33 | 50 | 100 | 94 | 35 | 30.5 | 75 | 5.5 | 6 | 32 | 1/2" | 15 | 68 |

| Model\Item | A | | | | | | | | | | | | | | | |
|------------|----|----|-----|-----|-----|-----|-----|-----|-----|-----|-----|-----|-----|-----|-----|-----|
| | 1F | 2F | 3F | 4F | 5F | 6F | 7F | 8F | 9F | 10F | 11F | 12F | 13F | 14F | 15F | 16F |
| 100M□F | 38 | 57 | 76 | 95 | 114 | 133 | 152 | 171 | 190 | 209 | 228 | 247 | 266 | 285 | 304 | 323 |
| 200M□F | 44 | 67 | 90 | 113 | 136 | 159 | 182 | 205 | 228 | 251 | 274 | 297 | 320 | 343 | 366 | 389 |
| 300M□F | 52 | 80 | 108 | 136 | 164 | 192 | 220 | 248 | 276 | 304 | 332 | 360 | - | - | - | - |
| 400M□F | 61 | 96 | 131 | 166 | 201 | 236 | 271 | 306 | - | - | - | - | - | - | - | - |

| Model\Item | KA | | | | | | | | | | | | | | | |
|------------|----|----|-----|-----|-----|-----|-----|-----|-----|-----|-----|-----|-----|-----|-----|-----|
| | 1F | 2F | 3F | 4F | 5F | 6F | 7F | 8F | 9F | 10F | 11F | 12F | 13F | 14F | 15F | 16F |
| 100M□F | 28 | 47 | 66 | 85 | 104 | 123 | 142 | 161 | 180 | 199 | 218 | 237 | 256 | 275 | 294 | 313 |
| 200M□F | 34 | 57 | 80 | 103 | 126 | 149 | 172 | 195 | 218 | 241 | 264 | 287 | 310 | 333 | 356 | 379 |
| 300M□F | 42 | 70 | 98 | 126 | 154 | 182 | 210 | 238 | 266 | 294 | 322 | 350 | - | - | - | - |
| 400M□F | 49 | 84 | 119 | 154 | 189 | 224 | 259 | 294 | - | - | - | - | - | - | - | - |